

Technical characteristics

Central unit

Motorola 32 bits micro controller
On-board LINUX OS
32Mb SDRam, 16Mb Flash EPROM
Inter-rack RS485 115Kbps bus
Backed up real time clock
1 Ethernet port 10/100 base T, TCP/UDP/IP
1 to 5 serial ports RS232/RS485
1 to 3 modems PSTL/LL (V90/V34/V32/V22bis/V22...),
GSM (Data, GPRS or SMS)
optical fiber interface, Wifi...
Vocal server, DTMF recognition

Input / Output characteristics

8 bits micro controller on each card
All or Nothing digital inputs or counters – Dry contacts
DEL display
Analog inputs 0/4-20mA 0-5/10V or PT100
Digital outputs – Bistable or impulse driven (configurable
from 1s to 24h) – relay 1 RW 60V 1A
DEL display
Wath-dog function
Analog outputs 4-20mA
Up to 1500 inputs/outputs and virtuals channels

12/24V ac/cc with backup battery charger
Option for a 230V/110Vac – 50-60Hz power supply

	ETOR	EANA	STOR	SANA	PT100/1000
PXI800	8				
PXI822	8	2	2		
PXI16E	16				
PXI8EA		8			
PXI8EAPT		4			4
PXI8S			8		
PXI4SA				4	

Internal monitoring control

Voltage and load current and battery discharge
Internal power supply temperature
Input/output cards communication status
Serial ports, modems and Ethernet status detection
Monitoring visual display by DEL
Watch dog and OS self control
Storage from anomalies in non-volatile files

1 to 8 racks – Fixing screws or DIN rail mountable
Size of a rack LxHxT 179x117x104mm
Operating temperature:
-5 to +55°C (stockage between -20°C & +70°C)
Relative humidity 5 to 90% noncondensing

Equipment CE marked, conform
to CEM directives and CEI standards
CEI 61000, IEC 801-4
IEC 801-5, CEI 60950
CEI 1151-2, CEI 1000-4-5
CTR21 (PSTN modems)
DI AI DO AO PT100

**PERAX
Hot-Line**

0033 562 759 570

sav@perax.com



**Versatility and Modularity
Serial Overequipment
Built-in ethernet**



P400xi
The all-included
remote management
processing



V-PlaQ Com-09/06.30

© bienvestudio - communication visuelle - 0.562.892.959



www.perax.com
perax@perax.com

48, rue de Fenouillet - BP 30226
31142 SAINT-ALBAN Cedex - France

T. +33 (0)5 62 75 95 75
F. +33 (0)5 61 70 35 93

PERAX

PERAX

Applications



Water and purification network services



Electricity networks



Boiler rooms and air conditioning



Municipal lighting



Industrial sites in the oil industry, food production



Commercial sites



Military and Seveso sites

A remote management system that has been proven...

Effective acquisition Up to 1500 informations from sensors and activators, managed by input/output cards, terminal units or programmable industrial systems...

Smart connections Multiple protocols (Modbus RTU, TCP, HART, MBUS, UnitelWay...) to communicate with automated systems, counters, sensors, regulators, badge readers...

Automatic operation and remote management Automatic operations, based on logical and analogical functions or IEC 60870-3 standard languages, averages, mini, maxi, thresholds, functional blocks, time slots, PID regulation, instructions, inter sites warnings...

Storage and archiving For events, variations, time-outs, multiple conditions, ability to archive more than 20 000 time-coded data and events, presented in table form, status reports, graphs, journals...

A communicating system Transmission of alarms and events to central monitoring stations or operators, via Internet or Intranet, telephone, leased or private lines, GSM. Information is sent in different formats : data, SMS, voice, fax, email... Time slots and configurable call management, processing individual or collective personalised alarms...

Total compatibility Compatible with the autonomous P16Xt meter reader, the PERAX Arlequin monitoring and the major servers and scada systems on the market...

Easy consultation With the Arlequin P400Xi software on Windows, graphic interface, operational and consultation modes, diagnostic and maintenance tools, on-line help, saving and local or remote transmission...

Simplified setup Consultation via Internet (html pages) on a PC, PDA or with an interactive « plug and play » local display unit, can be used with the monitoring system and in Excel.

Concentrated technology...

Developed with Linux, the P400Xi remote management system from PERAX uses latest 32 bits technologies. More powerful, more ergonomic and more accessible for communication, it's the best of its generation.

Internet technology

The P400Xi automated system from PERAX includes Internet technology. The P400Xi can be used from a PC or PDA via simple web browser thanks to its on-board WEB server. It is perfectly suited to an Intranet/Internet architecture and can work with multiple protocols for serial connection to several different products (automated management systems, counters, sensors, regulators...)

Completely modular

Modular and upgradable up to a capacity for acquisition of 1500 variables, it can send alarms or data by email, SMS, fax or vocally. The P400Xi is based upon a modular architecture composed of 1 to 8 racks, 4 plug-in cards connected by an RS485 bus and, optionally, 1 display 4 lines 20 characters per line connected to the same bus.

Optional accessories

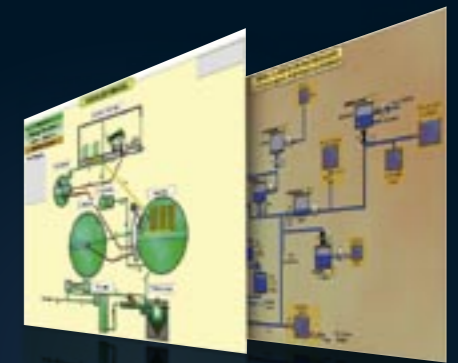
Optionally, the P400Xi can be equipped with a display unit and a keyboard, EDF counter interfaces, keys readers. PERAX even suggested a range of industrial sensors for pressure, flow, level, temperature...

Configuration help

The configuration tool developed for Windows allows simple and intuitive off-line configuration. You can upload that configuration locally or from a distance.

Easy maintenance

The addition or replacement of cards is fast and without tools, thanks to its mechanical rack, its front panel connectors and switches are accessible without disassembly. The P400Xi has, in addition, a tracking hardware and software for each card and statistics, allowing a diagnosis easy.



PERAX
P400Xi